

揉る



SILENT CUTTER

Cut

Knead

Mix

SC650-SC550-SC450-SC350-SC300-SC230-SC150-SC120/SCA/SC-J/NC/HC

● NEW CUTTER / HIGH SPEED SILENT CUTTER / FOOD CUTTER

Synchronize thin-cutting, agitating, kneading

SILENT CUTTER

Silent Cutter achieves kneading and mixing as well as Grinding Kneader, and is added various artifices and improvements to process in short time. Its durability is superior and the operation is easy.

Silent Cutter with kneader device finishes up the raw material with the best condition, and it is possible to expect the capacity increasing the time saving.

Application

Surimi (Fish Paste) Products, Meat Processing Products, Dairy Products, Foods containing vegetable protein and/or egg, Feed (breeding, bait for fishing), brewing (Miso, Soy sauce), seasoning, any other paste.

Features

■ The scraper is set beside the kneader device. The material which is adhered on the bowl surface is scraped by the scraper. Then they are quickly mixed and kneaded by the kneader device. This is why Silent Cutter can produce the completely finished products without leaving any unkneaded material on the bowl surface.

■ Mixing and kneading are done simultaneously. The material becomes glossy by add water.

■ The material volume increases and finishes softly since air goes into the material during mixing process.

■ Silent Cutter is easy to control the quality since 2 speed s for knife and bowl are chosen and combined freely.

【Full optional function】

■ Kneader device



Mixing function was developed to add the effect of kneading and mixing. The material which kneaded by Silent cutter with mixing function has good stretch, glossy and elasticity as well as Grinding kneader.

In addition, it is possible to expect improved efficiency and labor saving and the time saving. It is Mixing function which generalizes good points of Grind kneader and Silent cutter.

■ Speed changer

Speeds of knife and bowl can be set the combination of the speed change by dual speed changer.

■ Super slow device

This device rotates the knives extremely slow speed.

If this device is used with mixing function, the material has only stirring effect without cutting. It finishes softly and glossy product because much air and water go into the material while preventing heat. In case of solid mixture, it is able to mix without cutting.

■ Stainless steel specification

The main body is finished surface with stainless steel plate.

Bowl materials has 2 types; stainless steel (SCS13) and Stainless casting.

■ Bowl cover automatic open & close (SC120/150 are manual.)

■ Production management system (touch panel operation board)





■ Cutting knife (Selectable knife)

Standard type is 6 pcs/set of Round knife. 4 cut type, 8 pcs/set, 10 pcs/set are optionally available.

<8KNIVES/10KNIVES>

Slow down knife rotation speed and increase the knives so that kneading efficiency increase. It is high efficiency by faster bowl rotation speed and material contacts the knife enough because knife rotation speed is slow.



Turn our customer's voice into reality.

◆Bowl cover full-open system

SCA
Full Open Type SCA



To pursue easy cleaning!

SCA230-J

*Back design of bigger type than SCA230-J with full open spec is round shape.

Many track record for meat processing.

◆HIGH SPEED SILINT CUTTER

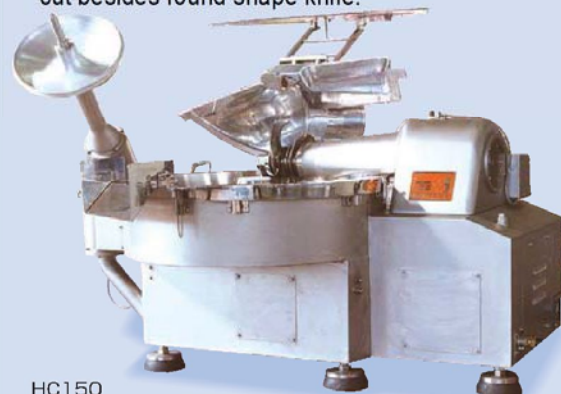
HC350 HC150

High Speed Silent Cutter Type HC350

High Speed Silent Cutter Type HC150

Selectable high/low rotation speed according to customer's request.

- High speed silent cutter is the best for meat processing.
- Low speed for rough cutting and mixing, high speed for the best emulsification and complete mixture.
- It is available special shape knife such as four cut besides round shape knife.



HC150

Our diversified lineup suggest the suitable model for

Superior speed control and improved motor efficiency by adopted new motor system realized energy saving!

Compact design which make points of workability and energy saving.

SC550-J
Silent Cutter SC550-J

SC450-J
Silent Cutter SC450-J

Silent cutter

SC-J

Silent Cutter TYPE J

SC650-J

Silent Cutter SC650-J

SC650-J



SC450-J



SC350-J

Silent Cutter SC350-J



SC350-J

*Bowl cover open



**SILENT
CUTTER**

SC230-J

Silent Cutter SC230-J

SC150-J

Silent Cutter SC150-J

Simple back design!



SC230-J



SC150-J

SILENT CUTTER SPECIFICATION SC650-J / SC550-J / SC450-J / SC350-J / SC230-J / SC150-J

| MODEL | BOWL INNER DIAM(mm) | BOWL CAPA(L) | KNIFE QTY | KNIFE SPEED (RPM) | BOWL SPEED (RPM) | TOTAL POWER(KW) | (KNIFE) | (BOWL) | (FAN) | (KNEADER) | (UNLOADER) | (KNEADER UP/DOWN) | (UNLOADER UP/DOWN) | (BOWL COVER OPEN/CLOSE) | WEIGHT(KG) | MEASUREMENT (L X W X H)mm |
|---------|------------------------|-----------------|--------------|----------------------|---------------------|--------------------|---------|--------|-------|-----------|------------|----------------------|-----------------------|----------------------------|------------|------------------------------|
| SC650-J | 1888 | 650 | 6 | 1000/500 | 8/4 | 98.21 | 90 | 3.7 | 0.06 | 2.2 | 1.5 | — | 0.75 | — | 6000 | 3130×2660×2675 |
| SC550-J | 1760 | 550 | 6 | 1500/750 | 8/4 | 63.66 | 55 | 3.7 | 0.06 | 2.2 | 1.5 | 0.4 | 0.4 | 0.4 | 5500 | 3000×2800×2290 |
| SC450-J | 1656 | 450 | 6 | 1500/750 | 8/4 | 53.66 | 45 | 3.7 | 0.06 | 2.2 | 1.5 | 0.4 | 0.4 | 0.4 | 4700 | 2865×2180×2310 |
| SC350-J | 1533 | 350 | 6 | 1400/700 | 10/5 | 42.11 | 37 | 2.2 | 0.06 | 1.5 | 0.75 | 0.2 | 0.4 | — | 3800 | 2910×2420×2080 |
| SC230-J | 1294 | 230 | 6 | 1400/700 | 10/5 | 35.11 | 30 | 2.2 | 0.06 | 1.5 | 0.75 | 0.2 | 0.4 | — | 2800 | 2710×2130×1865 |
| SC150-J | 1146 | 150 | 6 | 1400/700 | 10/5 | 18.31 | 15 | 1.5 | 0.06 | 0.75 | 0.4 | 0.2 | 0.4 | — | 2200 | 2300×1825×1890 |

the production and various usage.

SC550

Silent Cutter SC550

SC450

Silent Cutter SC450

SC550



▲ Turning spec (SCA550)



▲ Automatic raw material throw in by Lift boy



▲ Take out the material by Unloader



SC350

Silent Cutter SC350



SC350

SC300

Silent Cutter SC300

SC230

Silent Cutter SC230



SC300

SC120

Silent Cutter SC120



SC120

*Safety cover attached (option)

SC150

Silent Cutter SC150



SC150

SILENT CUTTER SPECIFICATION SC550 / SC450 / SC350

*Kneader device, super slow knife speed, sealing cover are optional functions.

| MODEL | BOWL INNER DIAM(mm) | BOWL CAPA(L) | KNIFE QTY | KNIFE SPEED (RPM) | BOWL SPEED (RPM) | TOTAL POWER(KW) | (KNIFE) | (BOWL) | (KNEADER) | (UNLOADER) | (KNEADER UP/DOWN) | (UNLOADER UP/DOWN) | (BOWL COVER OPEN/CLOSE) | WEIGHT(KG) | MEASUREMENT (L X W X H)mm |
|-------|------------------------|-----------------|--------------|----------------------|---------------------|--------------------|---------|--------|-----------|------------|----------------------|-----------------------|----------------------------|------------|------------------------------|
| SC550 | 1760 | 550 | 6 | 1500/750 | 8/4 | 63.60 | 55 | 3.7 | 2.2 | 1.5 | 0.4 | 0.4 | 0.4 | 5000 | 3040×2400×2200 |
| SC450 | 1656 | 450 | 6 | 1500/750 | 8/4 | 53.60 | 45 | 3.7 | 2.2 | 1.5 | 0.4 | 0.4 | 0.4 | 4200 | 3000×2380×2200 |
| SC350 | 1533 | 350 | 6 | 1400/700 | 10/5 | 42.05 | 37 | 2.2 | 1.5 | 0.75 | 0.4 | — | 0.2 | 3700 | 2840×2150×2100 |

SILENT CUTTER SPECIFICATION SC300 / SC230 / SC150 / SC120

*Knife shaft motor with 75kw is available for SC550.

| MODEL | BOWL INNER DIAM(mm) | BOWL CAPA(L) | KNIFE QTY | KNIFE SPEED (RPM) | BOWL SPEED (RPM) | TOTAL POWER(KW) | (KNIFE) | (BOWL) | (KNEADER) | (UNLOADER) | (KNEADER UP/DOWN) | (UNLOADER UP/DOWN) | (BOWL COVER OPEN/CLOSE) | WEIGHT(KG) | MEASUREMENT (L X W X H)mm |
|-------|------------------------|-----------------|--------------|----------------------|---------------------|--------------------|---------|--------|-----------|------------|----------------------|-----------------------|----------------------------|------------|------------------------------|
| SC300 | 1423 | 300 | 6 | 1400/700 | 10/5 | 42.05 | 37 | 2.2 | 1.5 | 0.75 | 0.4 | 0.2 | 0.2 | 2800 | 2800×2030×2100 |
| SC230 | 1294 | 230 | 6 | 1400/700 | 10/5 | 35.05 | 30 | 2.2 | 1.5 | 0.75 | 0.4 | 0.2 | 0.2 | 2600 | 2700×1920×1780 |
| SC150 | 1146 | 150 | 6 | 1400/700 | 10/5 | 18.05 | 15 | 1.5 | 0.75 | 0.4 | 0.4 | 0.2 (option) | 0.2 (option) | 1630 | 2370×1830×1670 |
| SC120 | 1049 | 120 | 4/6 | 1400/700 | 10/5 | 12.95 | 11 | 0.75 | 0.4 | 0.4 | 0.4 | — | — | 1360 | 2300×1500×1600 |

GREAT EFFECT FOR KNEADING
AGITATING MACHINE WITH UNIQUE CURVED BLADE

NEW CUTTER

NC550

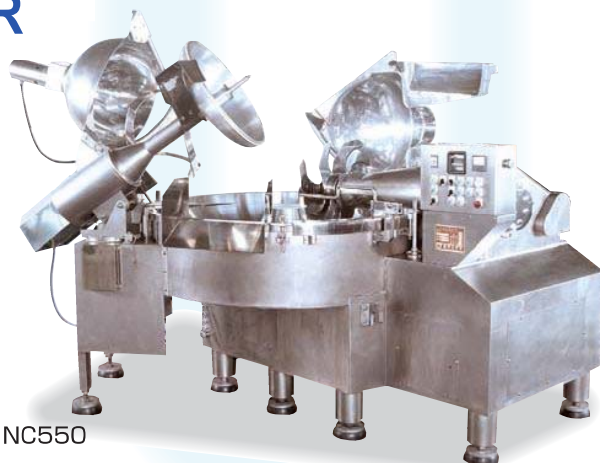
New Cutter NC550

NC450

New Cutter NC450

NC350

New Cutter NC350



NC550



NEW CUTTER

NEW TYPE COMBINATION MACHINE

SILENT CUTTER + **MIXER** + **GRINDING KNEADERR**

This is the ideal Cutter for kneading with properties combined speed by Silent cutter and viscosity by Grind kneader. Unique blade which advanced agitator device enhances effects on agitating and kneading. Cutter knife and bowl rotate by 2 speeds. It can finish fine product by choosing the speeds for shredding, kneading and diluting Surimi.



Unique blade for kneader device

This unique blade is developed to improve the effects of mixing and kneading. Viscosity, gloss and mixing are enriched compared with Grind kneader.

BOWL COVER FULL OPEN

NCA

New Cutter NCA

NCA350



SC100-N/SC60-N/SC20-N

Silent Cutter SC100-N/SC60-N/SC20-N

- Suitable for examination, school practice, laboratory, ham, sausage, pickles, chopped material



SC60-N

フードカッター

FOOD CUTTER

- This is for small-scale production like laboratory and shop. It is also suitable for minced vegetable.



NEW CUTTER SPECIFICATION NC550 / NC450 / NC350

| MODEL | BOWL INNER DIAM(mm) | BOWL CAPA(L) | KNIFE QTY | KNIFE SPEED (RPM) | KNIFE SUPER SLOW (RPM) | BOWL SPEED (RPM) | TOTAL POWER(KW) | WEIGHT (kgs) | MEASUREMENT (L X W X H)mm |
|-------|---------------------|--------------|-----------|-------------------|------------------------|------------------|-----------------|--------------|---------------------------|
| NC550 | 1760 | 550 | 6 | 1500/750 | 80 | 8/4 | 67.1 | 5500 | 3450×2480×2470 |
| NC450 | 1656 | 450 | 6 | 1500/750 | 80 | 8/4 | 57.1 | 5000 | 3360×2550×2080 |
| NC350 | 1533 | 350 | 6 | 1400/700 | 80 | 10/5 | 46.25 | 4500 | 2950×2450×1950 |

*Knife shaft motor with 75kw is available for NC550.

SILENT CUTTER SPECIFICATION SC100-N / SC60-N / SC20-N

| MODEL | BOWL INNER DIAM(mm) | BOWL CAPA(L) | KNIFE QTY | KNIFE SPEED (RPM) | BOWL SPEED (RPM) | TOTAL POWER(KW) | WEIGHT (kgs) | MEASUREMENT (L X W X H)mm |
|---------|---------------------|--------------|-----------|-------------------|------------------|---------------------|--------------|---------------------------|
| SC100-N | 905 | 115 | 6 | 1450 | 7/8 (KNIFE/BOWL) | 75/0.4 (KNIFE/BOWL) | 640 | 1255×1100×1250 |
| SC60-N | 745 | 60 | 3 | 1450 | 9 | 2.2 | 450 | 1050×950×1165 |
| SC20-N | 565 | 23 | 3 | 1450 | 10 | 0.75 | 230 | 845×680×1130 |

FOOD CUTTER SPECIFICATION

| MODEL | BOWL INNER DIAM(mm) | BOWL CAPA(L) | KNIFE QTY | KNIFE SPEED (RPM) | BOWL SPEED (RPM) | TOTAL POWER(KW) | WEIGHT (kgs) | MEASUREMENT (L X W X H)mm |
|-------------|---------------------|--------------|-----------|-------------------|------------------|-----------------|--------------|---------------------------|
| FOOD CUTTER | 383 | 5 | 2 | 1450 | 26.5 | 3P 100V 0.2 | 33 | 520×440×480 |

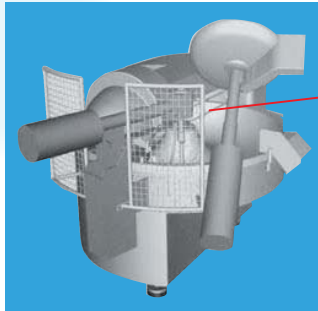
HIGH SPEED SILENT CUTTER SPECIFICATION / HC350 / HC150

| MODEL | BOWL INNER DIAM(mm) | BOWL CAPA(L) | KNIFE QTY | KNIFE SPEED (RPM) | BOWL SPEED (RPM) | TOTAL POWER(KW) | (KNIFE) | (BOWL) | (UNLOADER) | (BOWL COVER) | WEIGHT (kgs) | MEASUREMENT (L X W X H)mm |
|-------|---------------------|--------------|-----------|-------------------|------------------|-----------------|---------|--------|------------|--------------|--------------|---------------------------|
| HC350 | 1533 | 350 | 6 | 3000/1500 | 15/7.5 | 59.85 | 55 | 3.7 | 0.75 | 0.4 | 3900 | 2860×2150×2100 |
| HC150 | 1146 | 150 | 6 | 3000/1500 | 15/7.5 | 41.3 | 37 | 3.7 | 0.4 | 0.2 | 1750 | 2470×1650×1670 |

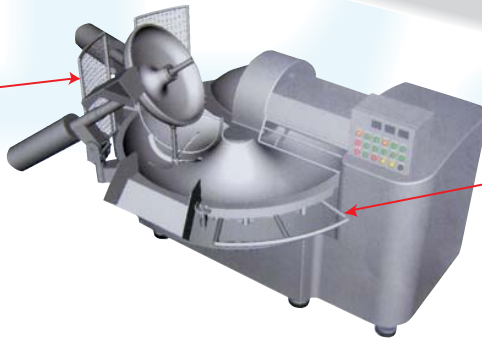
Enhance safety and maintainability

(PROMOTION OF SAFETY MEASURES)

"The ordinance on industrial safety and health" was issued in October 2013 which obliged it to safety measures depending on characteristic of work. Not only worker using machine but also manufacturer making machine must make safety measures. We would like to introduce some safety measures on Silent cutter.



Safety guard for kneader device



Safety guard for material inlet

Progress safety and maintainability (measure examples)



● Fully enclosed bowl cover (*manual)



● Cover auto up & down

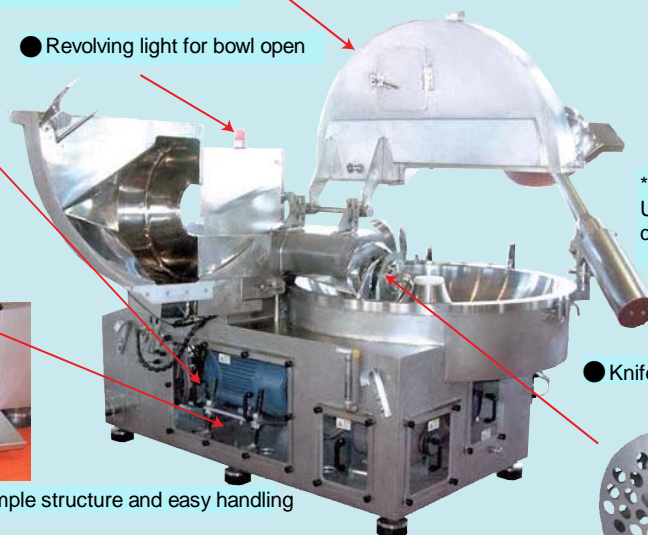
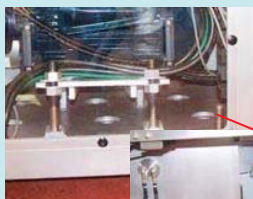


● Enclosed cover on material inlet

● Transparent cover (for visual checking)

● Revolving light for bowl open

● Drains inside of body frame (slide type)



*Bowl cover, unloader Up&down only work during push the button

● Knife cover for cleaning

● Knife detachment device with simple structure and easy handling



● Accident prevention in case of maintenance.

*Frame cover detachment sensor

*Handle type braker attached to control board door

Emergency stop button

It can stop the motor instantly by starting the brake with built-in motor and interrupting the electricity to knife and inverter. (It may cause the machine trouble.)



SAFETY



株式会社ヤナギヤ
YANAGIYA MACHINERY CO., LTD.

head office & factory

189-18 Yoshiwa, Ube City, Yamaguchi Pref. Japan

TEL: +81-836-62-1665 FAX: +81-836-62-1611

EU office

67, Quai Boissy D'Anglas 78380-Bougival, France

TEL: +33-6-8556-0914 FAX: +33-1-3969-3832

<http://www.ube-yanagiya.com>